

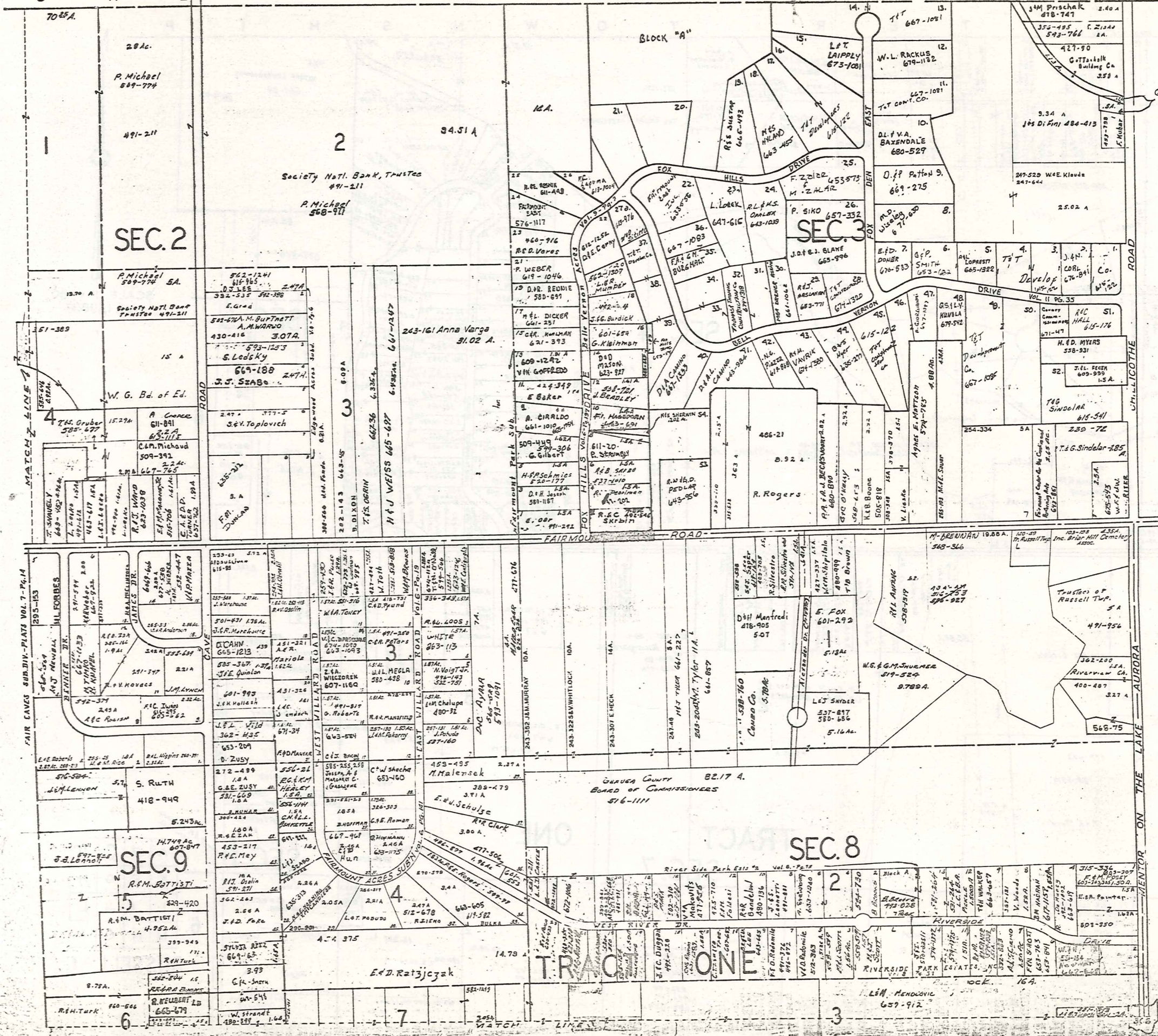
SCALE 1" = 300'  
 JAN. 1, 1984

A	B	C	D
E	F	G	H
I	J	K	L
M	N	O	P

RUSSEL

C H E S T E R T O W N S H I P

306

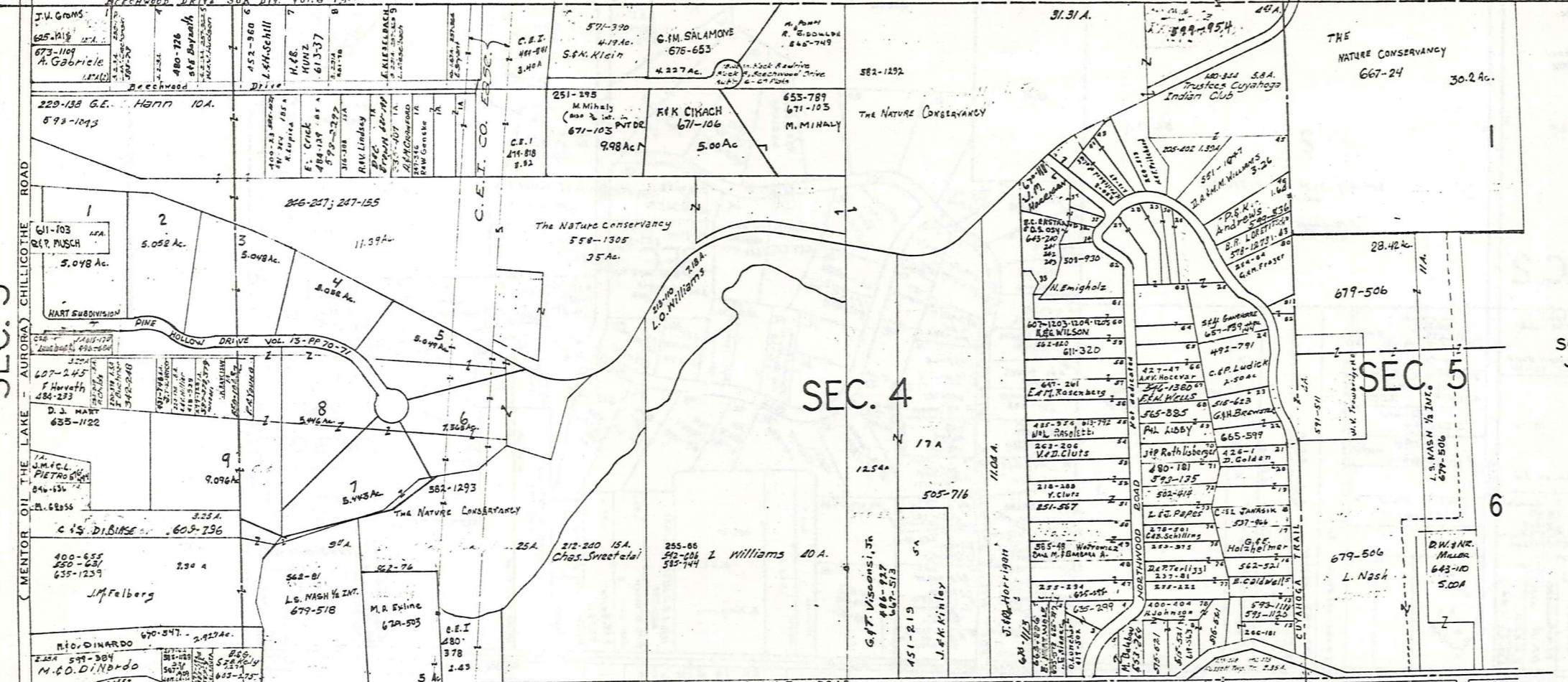


G.P. Kattke  
C. Blatnik  
635-35

SCALE 1"=300'  
JAN. 1, 1958

A	B	C	D
E	F	G	H
I	J	K	L
M	N	O	P

RUSSELL-B



SCALE 1" = 300'  
JAN. 1, 1963

SEC. 3

SEC. 4

SEC. 5

SEC. 8

TRACT SEC. 7

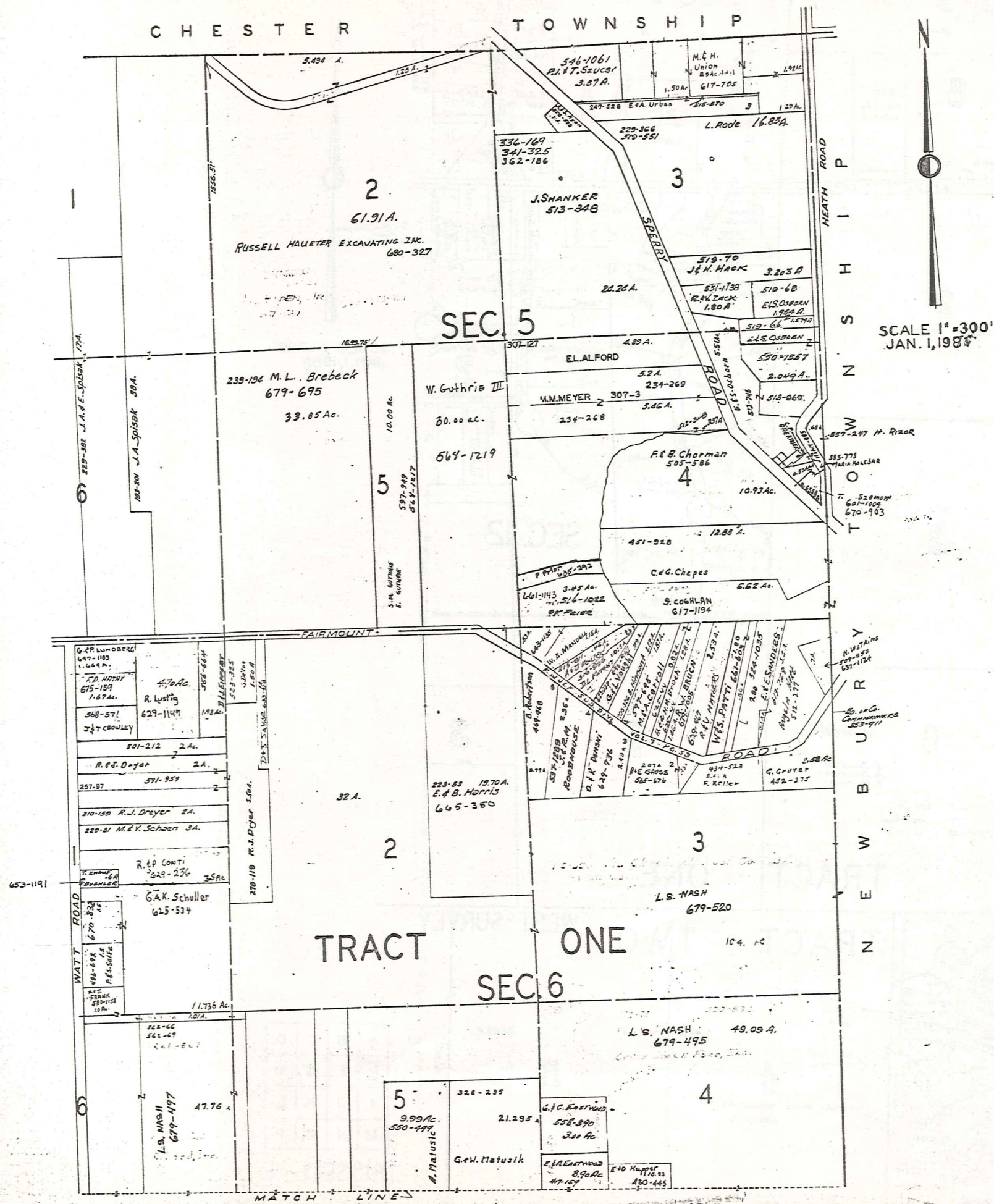
ONE

SEC. 6

A	B	C	D
E	F	G	H
I	J	K	L
M	N	O	P

RUSSELL-C

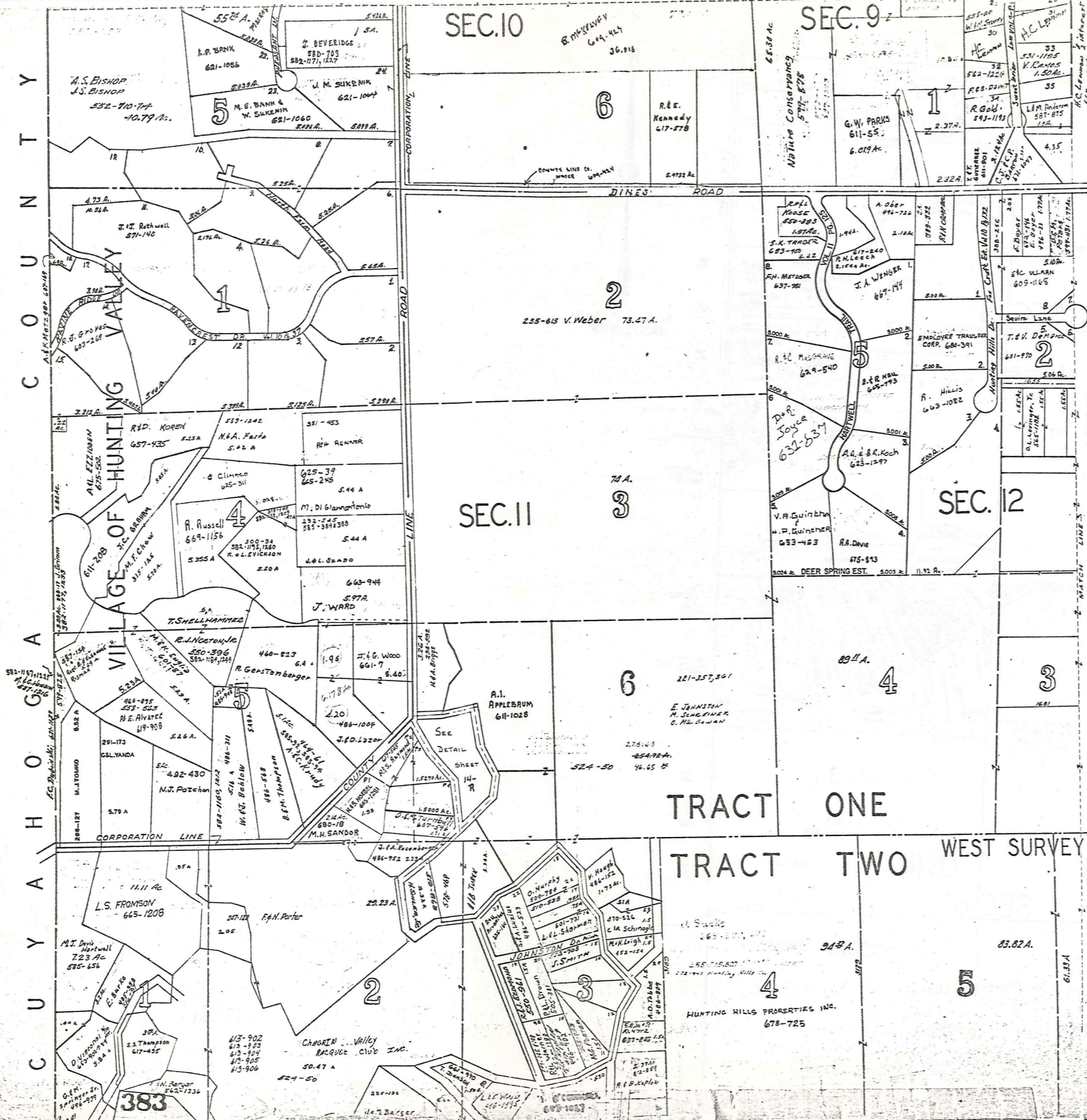
CHESTER TOWNSHIP



A	B	C	D
E	F	G	H
I	J	K	L
M	N	O	P

RUSSELL-D

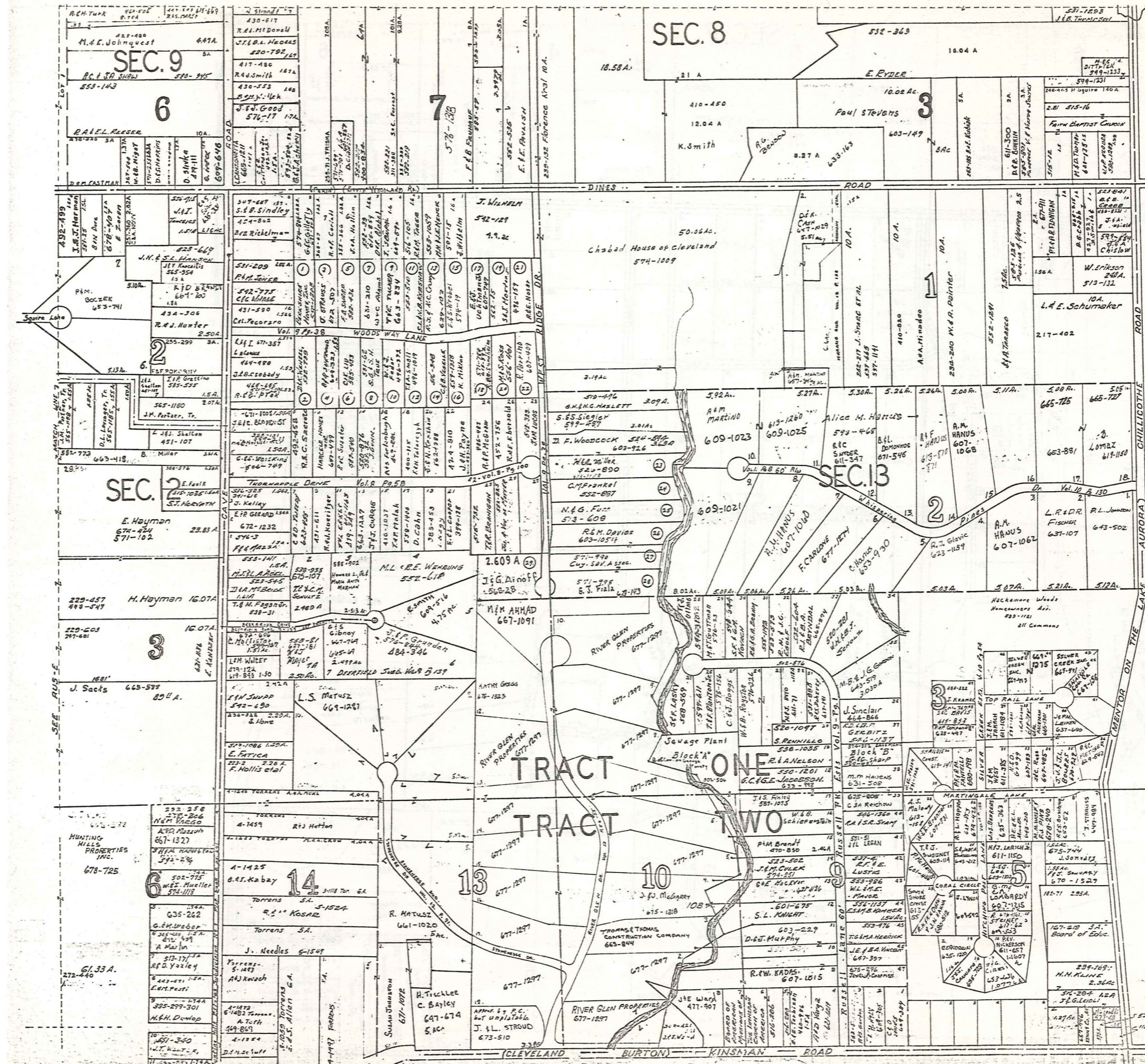
C O U N T Y C O U N T Y C O U N T Y C O U N T Y C O U N T Y



SCALE 1" = 300'  
JAN. 1, 1928

A	B	C	D
E	F	G	H
I	J	K	L
M	N	O	P

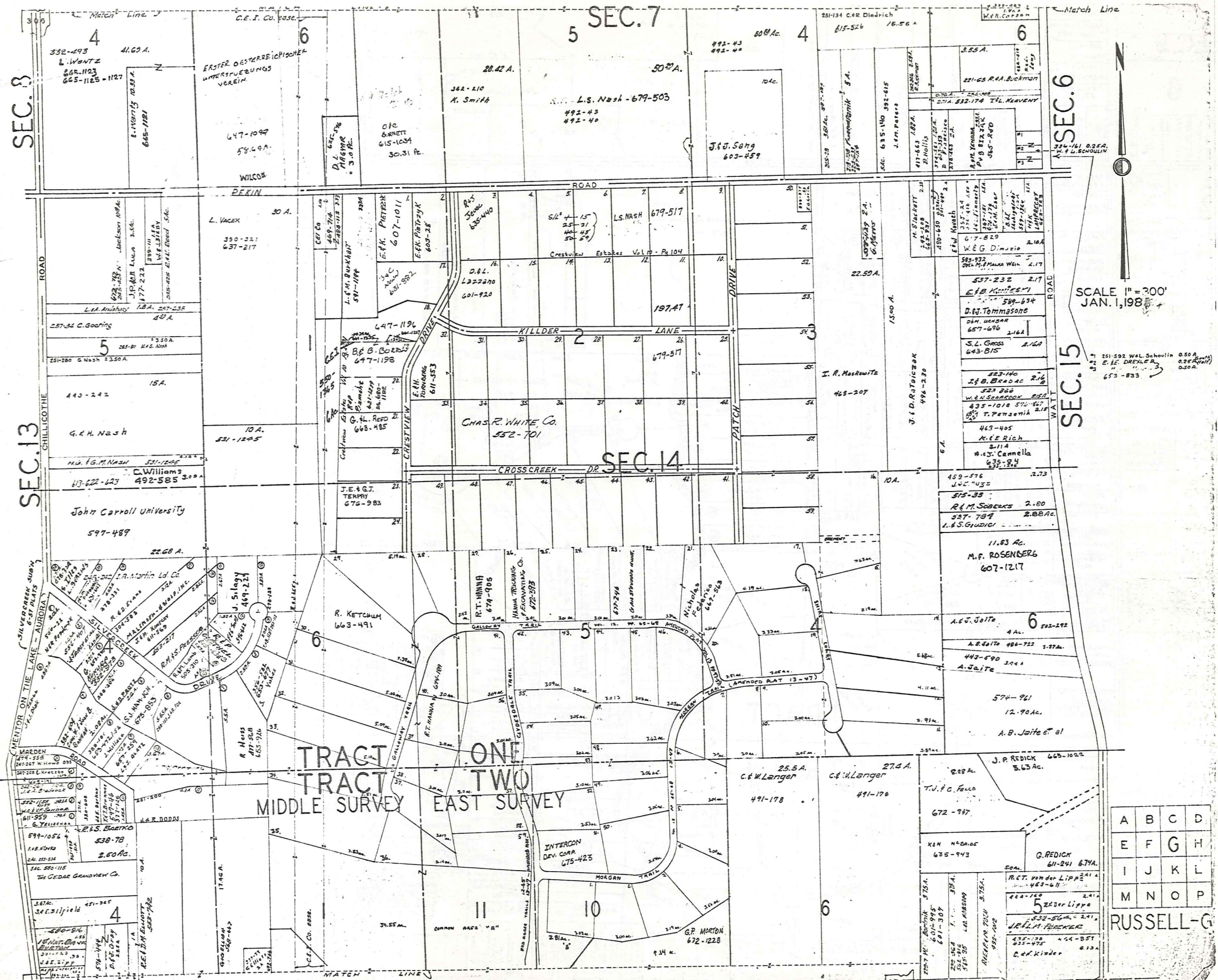
RUSSELL-E



SCALE 1" = 300'  
 JAN. 1, 1923

A	B	C	D
E	F	G	H
I	J	K	L
M	N	O	P

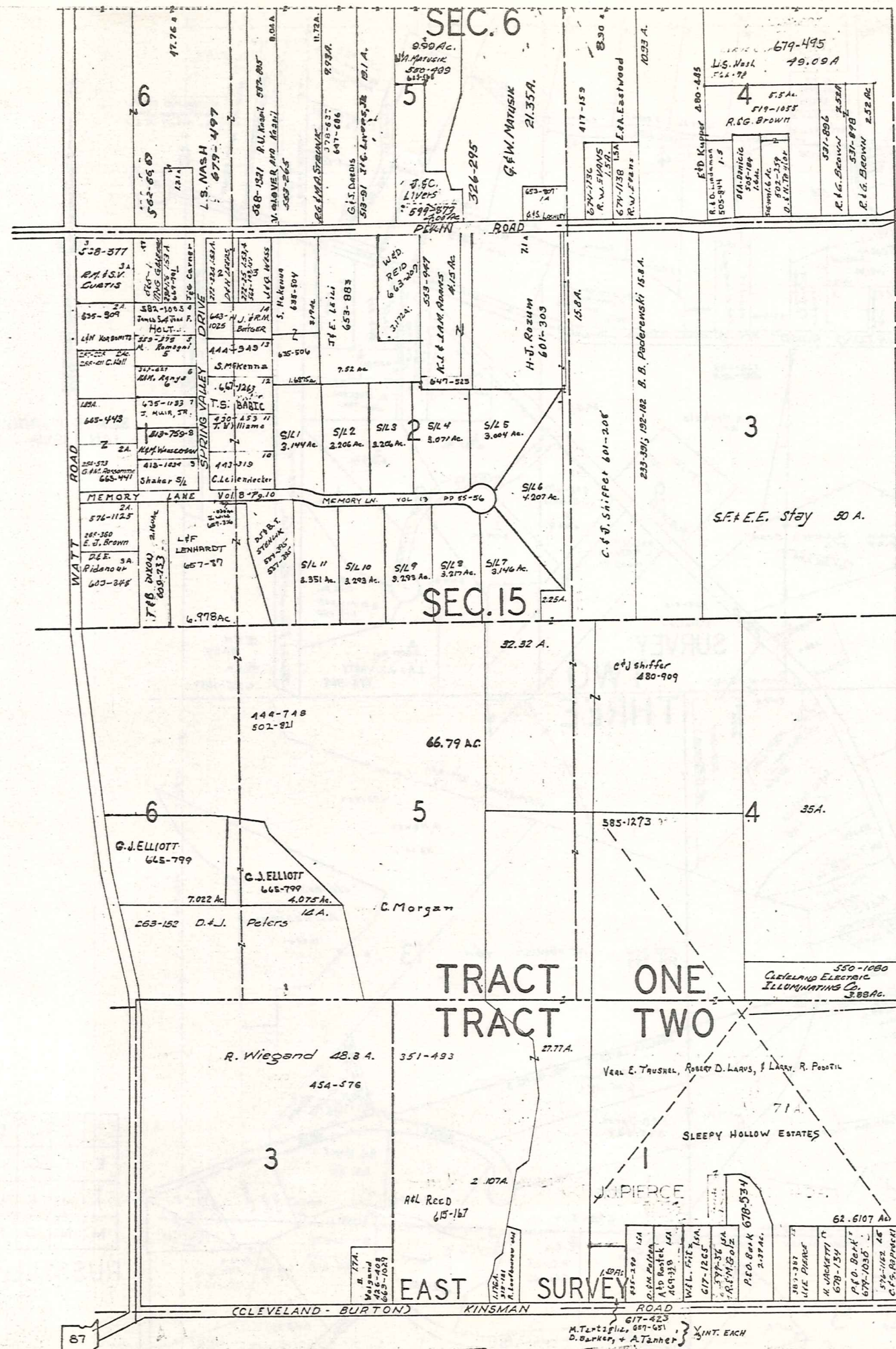
RUSSELL - F



SCALE 1" = 300'  
JAN. 1, 1988

A	B	C	D
E	F	G	H
I	J	K	L
M	N	O	P

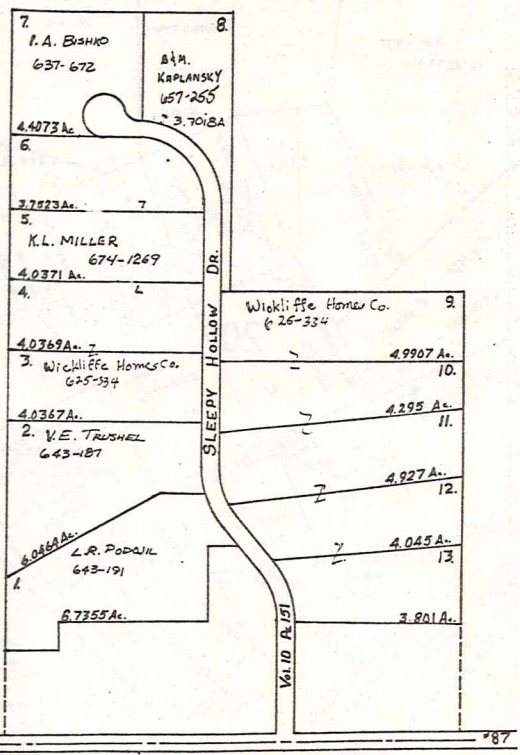
RUSSELL-G



P  
I  
H  
S  
N  
W  
T  
O  
R  
Y  
B  
U  
R  
N  
E  
N



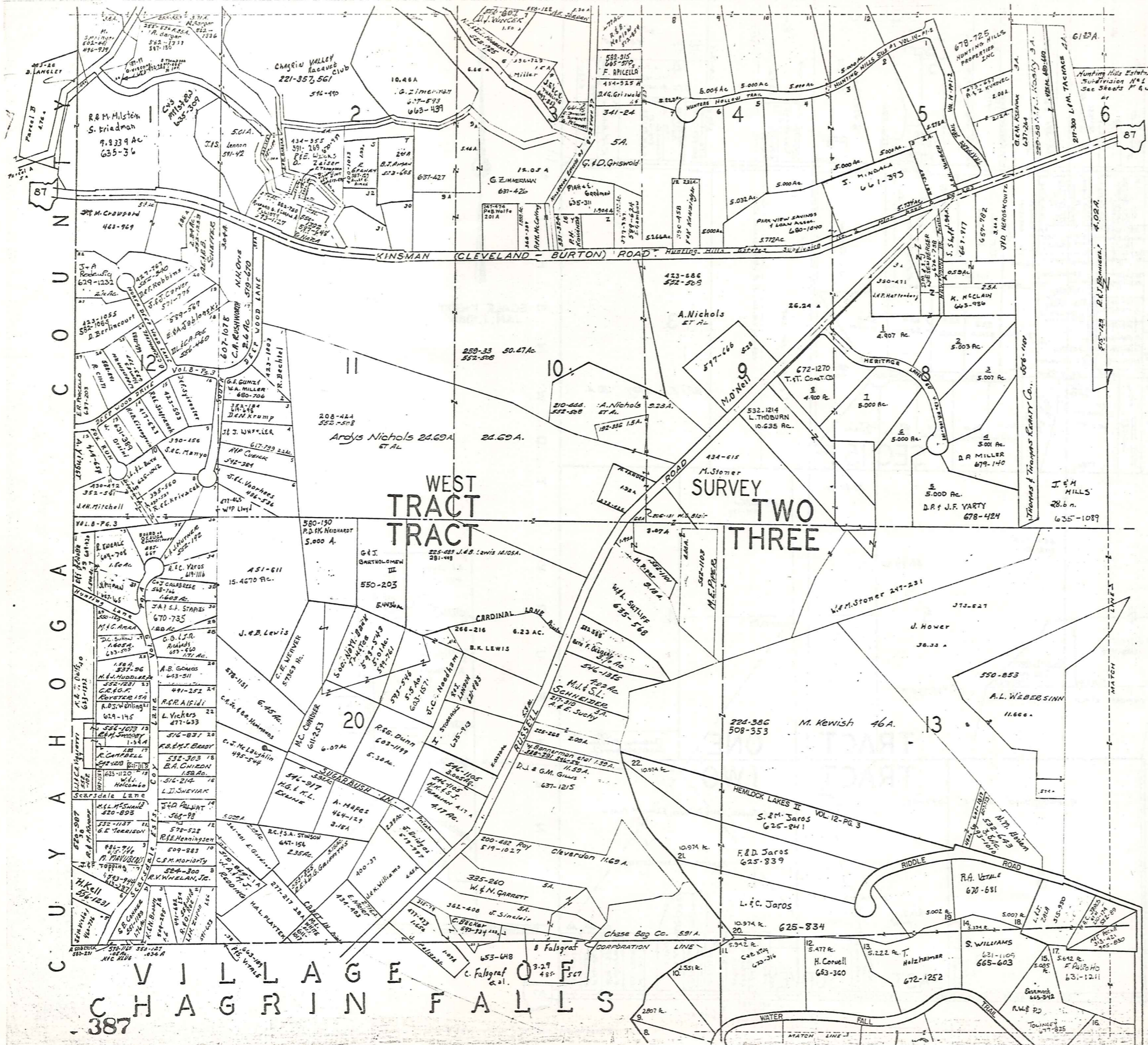
SCALE 1"=300'  
JAN. 1, 1987



A	B	C	D
E	F	G	H
I	J	K	L
M	N	O	P

RUSSELL-H

M. T. ... D. ... } INT. EACH

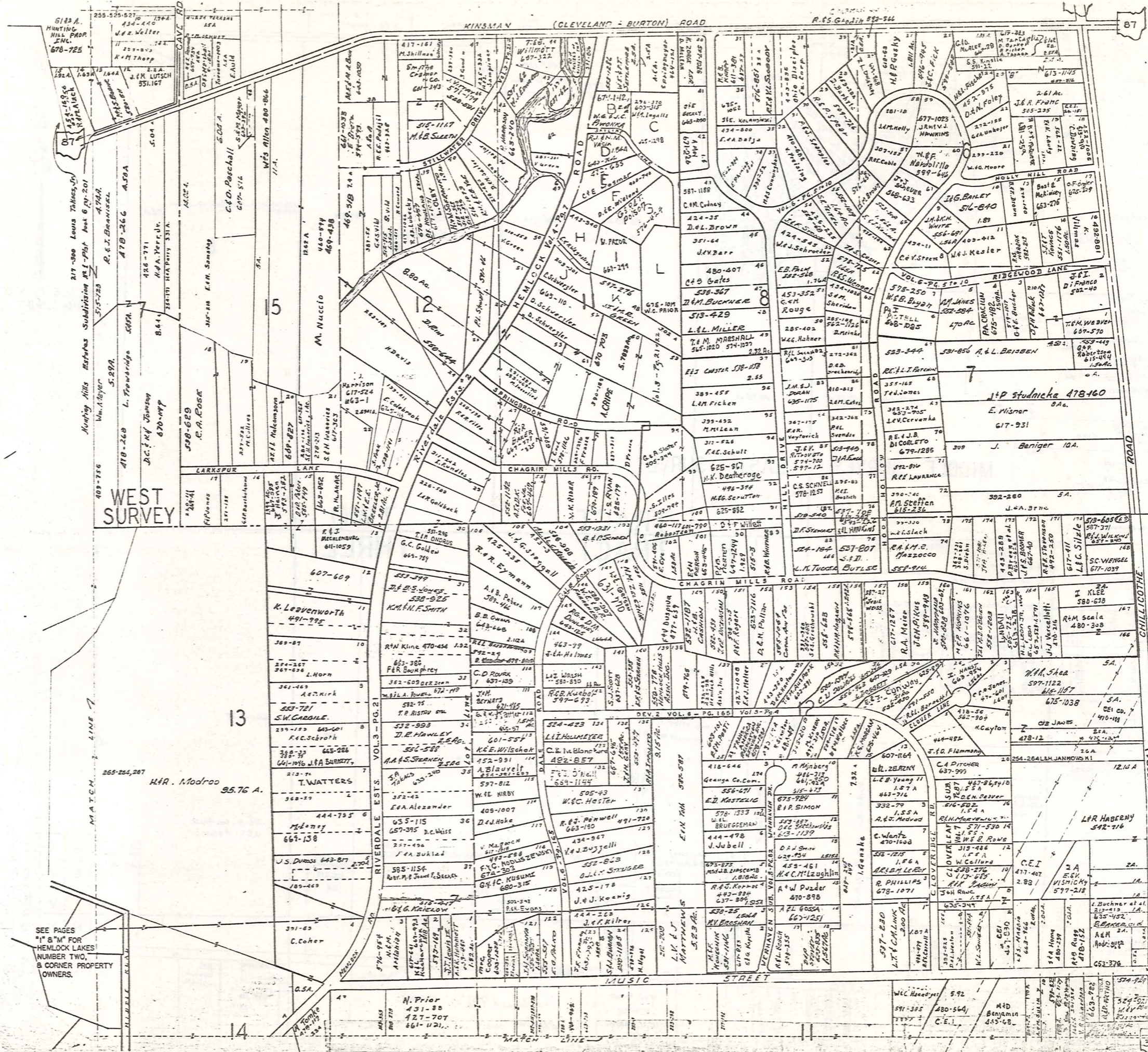


SCALE 1"=300'  
JAN. 1, 1984

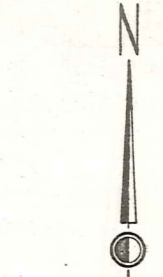
	B	C	D
E	F	G	H
I	J	K	L
M	N	O	P

RUSSELL-1

VILLAGE OF  
CHAGRIN FALLS  
387



87

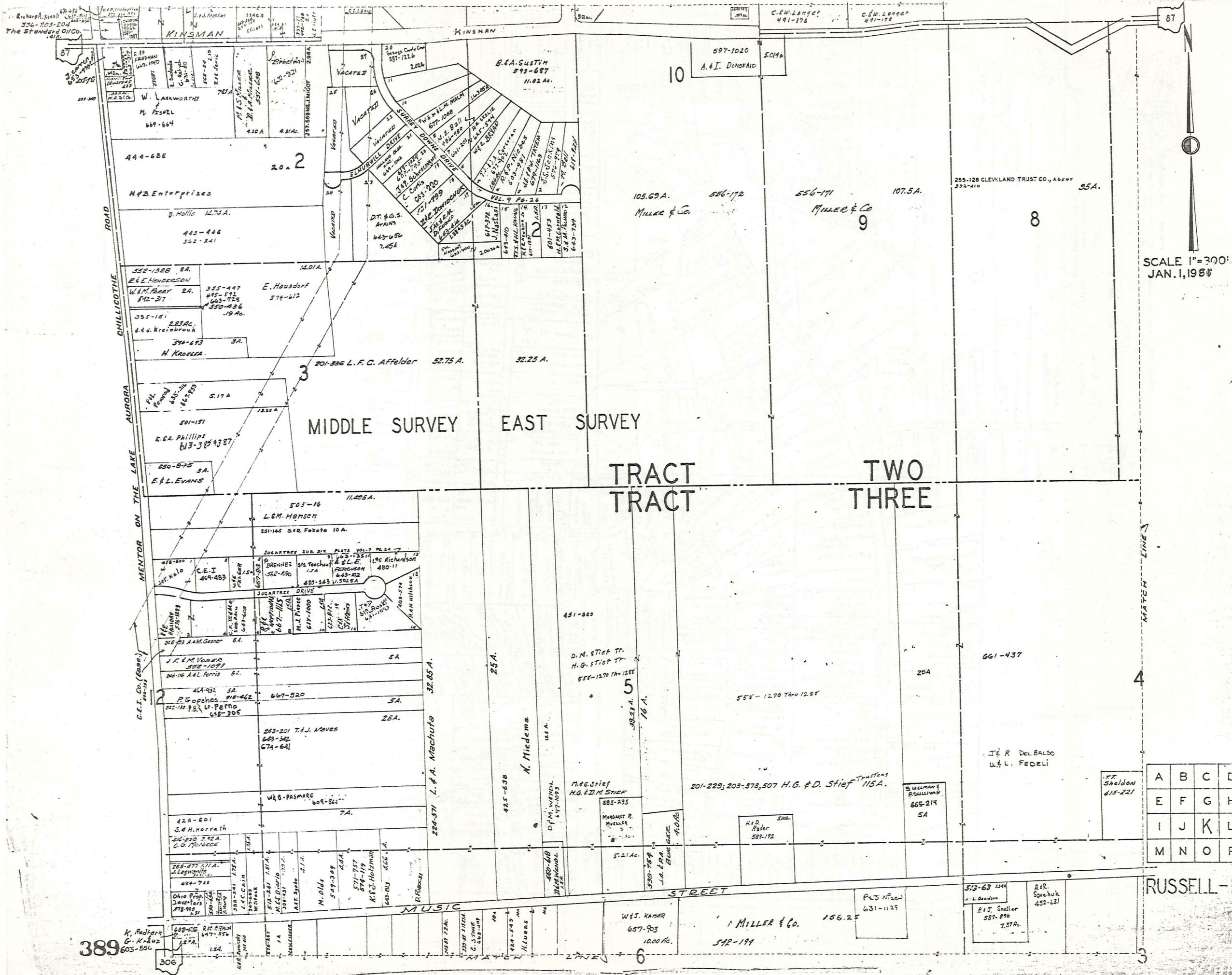


SCALE 1" = 300'  
JAN. 1, 1928

SEE PAGES  
"A" & "M" FOR  
HEMLOCK LAKES  
NUMBER TWO,  
B CORNER PROPERTY  
OWNERS.

A	B	C	D
E	F	G	H
I	J	K	L
M	N	O	P

RUSSELL  
388



A	B	C	D
E	F	G	H
I	J	K	L
M	N	O	P

RUSSELL-K

389

306

4

3

10

105.69 A.

Miller & Co.

Miller & Co.

9

8

TRACT TWO

TRACT THREE

451-360

D.M. Stief Tr.

H.G. Stief Tr.

555-1270 THRU 1287

58.23 A.

16 A.

18.5 A.

M.G. Stief

H.G. & D.M. Stief

585-235

MARGARET R. MULLER

5.21 Ac.

585-759

J.A. P.A. BURK

5.01 Ac.

H.D. Pader

587-192

5.21 Ac.

585-759

J.A. P.A. BURK

5.01 Ac.

585-759

J.A. P.A. BURK

5.01 Ac.

585-759

J.A. P.A. BURK

5.01 Ac.

585-759

J.A. P.A. BURK

5.01 Ac.

585-759

J.A. P.A. BURK

5.01 Ac.

585-759

J.A. P.A. BURK

5.01 Ac.

585-759

J.A. P.A. BURK

5.01 Ac.

585-759

J.A. P.A. BURK

5.01 Ac.

585-759

J.A. P.A. BURK

5.01 Ac.

585-759

J.A. P.A. BURK

5.01 Ac.

585-759

J.A. P.A. BURK

5.01 Ac.

585-759

J.A. P.A. BURK

5.01 Ac.

585-759

J.A. P.A. BURK

5.01 Ac.

585-759

J.A. P.A. BURK

5.01 Ac.

585-759

J.A. P.A. BURK

5.01 Ac.

585-759

J.A. P.A. BURK

5.01 Ac.

585-759

J.A. P.A. BURK

5.01 Ac.

585-759

J.A. P.A. BURK

5.01 Ac.

585-759

J.A. P.A. BURK

5.01 Ac.

585-759

J.A. P.A. BURK

5.01 Ac.

585-759

J.A. P.A. BURK

5.01 Ac.

585-759

J.A. P.A. BURK

5.01 Ac.

585-759

J.A. P.A. BURK

5.01 Ac.

585-759

J.A. P.A. BURK

5.01 Ac.

585-759

J.A. P.A. BURK

5.01 Ac.

585-759

J.A. P.A. BURK

5.01 Ac.

585-759

J.A. P.A. BURK

5.01 Ac.

585-759

J.A. P.A. BURK

5.01 Ac.

585-759

J.A. P.A. BURK

5.01 Ac.

585-759

J.A. P.A. BURK

5.01 Ac.

585-759

J.A. P.A. BURK

5.01 Ac.

585-759

J.A. P.A. BURK

5.01 Ac.

585-759

J.A. P.A. BURK

5.01 Ac.

585-759

J.A. P.A. BURK

5.01 Ac.

585-759

J.A. P.A. BURK

5.01 Ac.

585-759

J.A. P.A. BURK

5.01 Ac.

585-759

J.A. P.A. BURK

5.01 Ac.

585-759

J.A. P.A. BURK

5.01 Ac.

585-759

J.A. P.A. BURK

5.01 Ac.

585-759

J.A. P.A. BURK

5.01 Ac.

585-759

J.A. P.A. BURK

5.01 Ac.

585-759

J.A. P.A. BURK

5.01 Ac.

585-759

J.A. P.A. BURK

5.01 Ac.

585-759

J.A. P.A. BURK

5.01 Ac.

585-759

J.A. P.A. BURK

5.01 Ac.

585-759

J.A. P.A. BURK

5.01 Ac.

585-759

J.A. P.A. BURK

5.01 Ac.

585-759

J.A. P.A. BURK

5.01 Ac.

585-759

J.A. P.A. BURK

5.01 Ac.

585-759

J.A. P.A. BURK

5.01 Ac.

585-759

J.A. P.A. BURK

5.01 Ac.

585-759

J.A. P.A. BURK

5.01 Ac.

585-759

J.A. P.A. BURK

5.01 Ac.

585-759

J.A. P.A. BURK

5.01 Ac.

585-759

J.A. P.A. BURK

5.01 Ac.

585-759

J.A. P.A. BURK

5.01 Ac.

585-759

J.A. P.A. BURK

5.01 Ac.

585-759

J.A. P.A. BURK

5.01 Ac.

585-759

J.A. P.A. BURK

5.01 Ac.

585-759

J.A. P.A. BURK

5.01 Ac.

585-759

J.A. P.A. BURK

5.01 Ac.

585-759

J.A. P.A. BURK

5.01 Ac.

585-759

J.A. P.A. BURK

5.01 Ac.

585-759

J.A. P.A. BURK

5.01 Ac.

585-759

J.A. P.A. BURK

5.01 Ac.

585-759

J.A. P.A. BURK

5.01 Ac.

585-759

J.A. P.A. BURK

5.01 Ac.

585-759

J.A. P.A. BURK

5.01 Ac.

585-759

J.A. P.A. BURK

5.01 Ac.

585-759

J.A. P.A. BURK

5.01 Ac.

585-759

J.A. P.A. BURK

5.01 Ac.

585-759

J.A. P.A. BURK

5.01 Ac.

585-759

J.A. P.A. BURK

5.01 Ac.

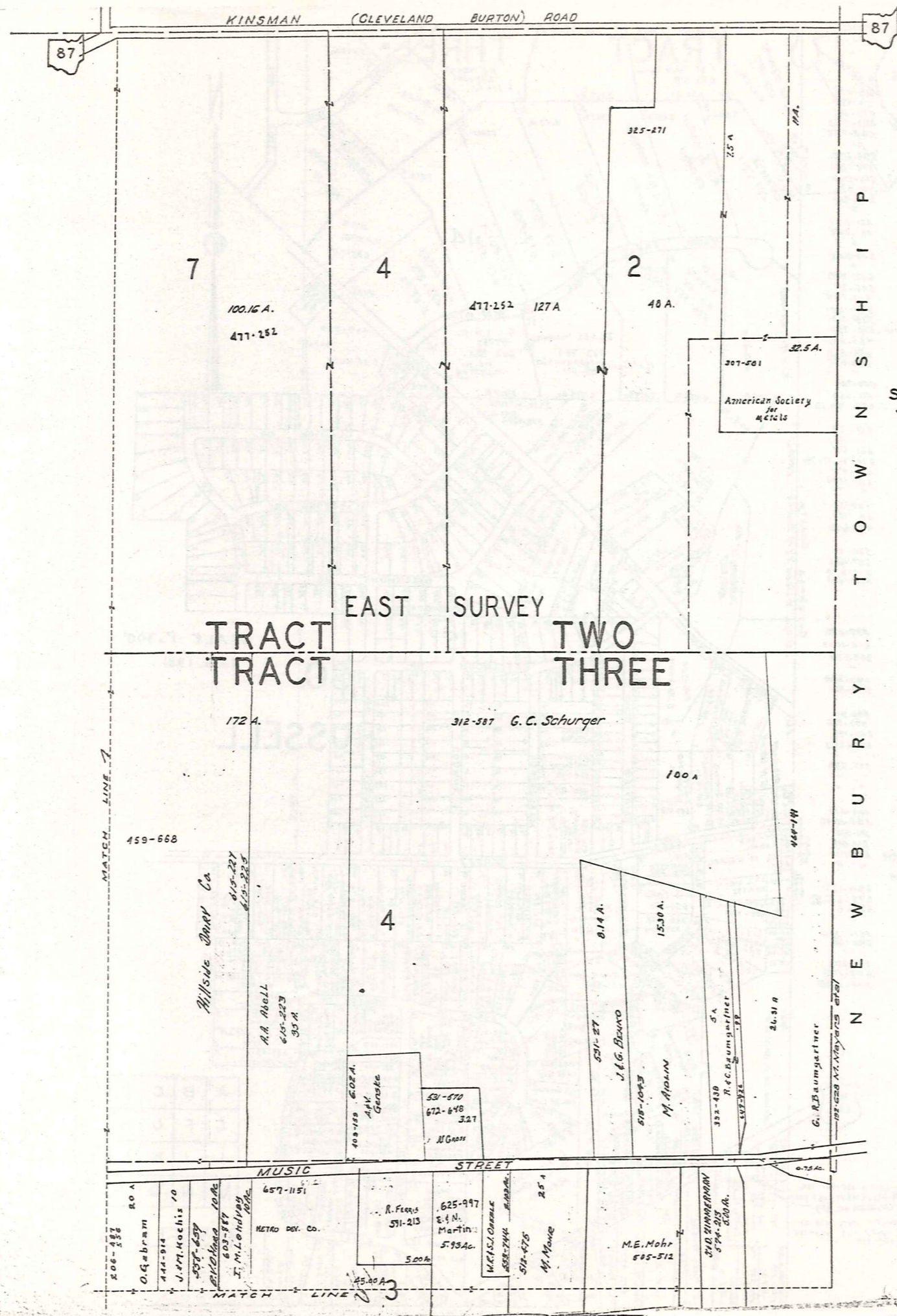
585-759

J.A. P.A. BURK

5.01 Ac.

585-759

J.A. P.A. BURK



87

87

N

SCALE 1"=300'  
JAN: 1, 1985

A	B	C	D
E	F	G	H
I	J	K	L
M	N	O	P

RUSSELL-L

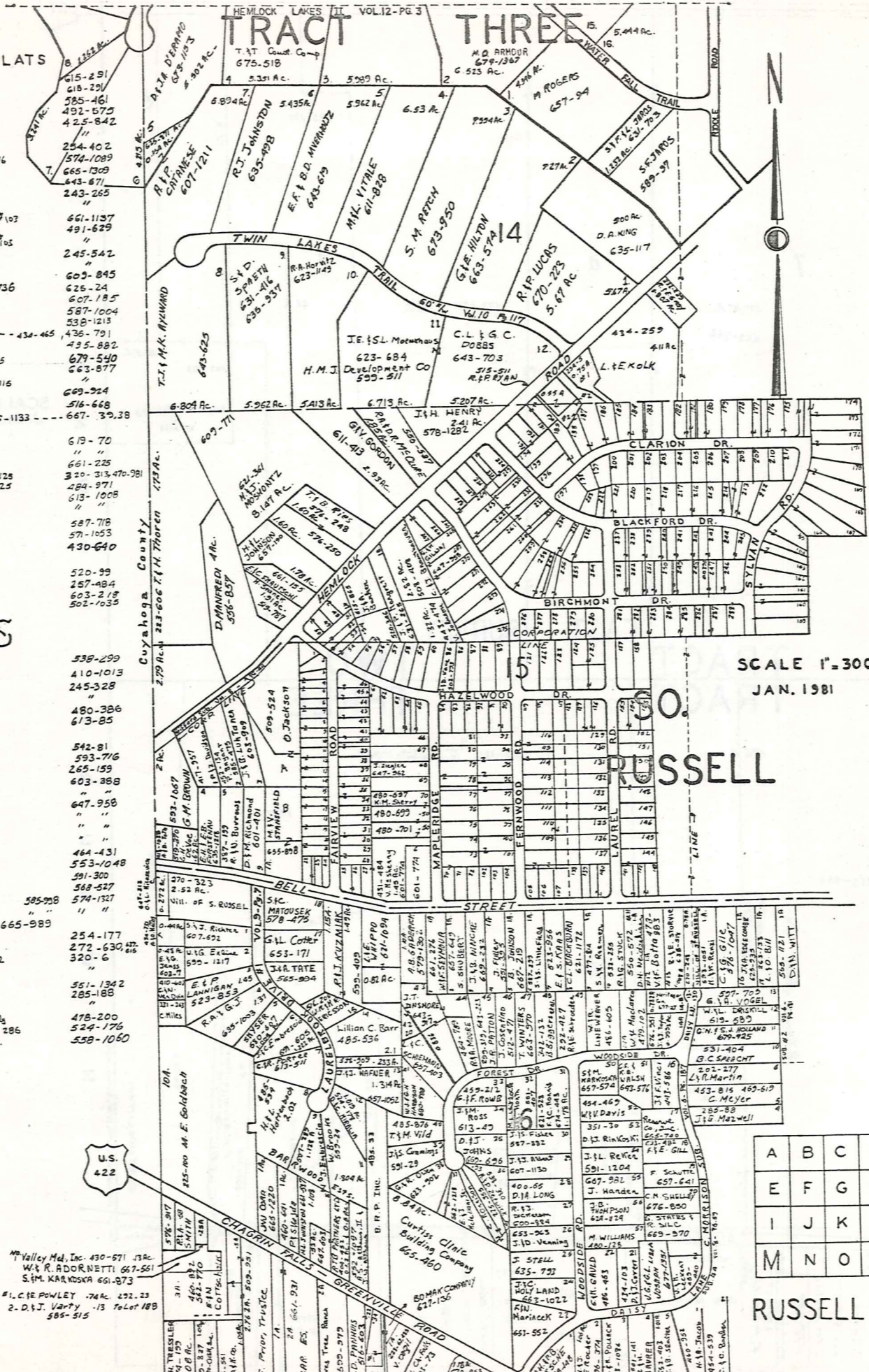
CHAGRIN HEIGHTS SUBDIVISION

VOL. 3 - PG. 5-6 & 17-18 PLATS

1	GERUGA COUNTY B.O.C. (part of)	621-728	46 R. LASH & KETCHEL	609-331	91 C.P. Petrovic	615-291
2	F. WILEY	535-35	47 W. WISE	600-305	92 T.M. Giam	618-201
3	D. Man Fredi	454-896	48 "	49 D.L. LOPATT	239-286	93 R. & P. Van Brakum
4	"	"	49 D.L. LOPATT	239-286	94 W.J. Grievson	492-673
5	"	"	50 "	51 G.A. LASH	823-106	95 "
6	E. Unkrich	615-229	52 "	52 "	254-402	96 "
7	"	"	53 "	53 "	574-1089	97 J.C. MALLE
8	E. Unkrich	574-82	54 "	54 "	665-1309	98 W.D. GRUBLE
9	"	"	55 P.M. LOY	609-837	643-671	99 R.C. SCHLOSS
10	S. OLLAND	615-238	56 V.A. I.D.M. BARRIBALL	675-855	100 C.F.B. HARMON	243-265
11	O. DIAMOND	574-575	57 W. WENDL	245-22	101 "	101
12	"	"	58 M. TALLION	553-286	102 J.F.N. HANNON	661-1137
13	"	"	59 K. SCOVON	574-1255	103 F.E. WISNIEWSKI	491-629
14	J.G. & U.V. TALLMAN	520-758	60 R.K. VENEL	601-625	104 "	104
15	"	"	61 M. KELLNER	326-27	105 C.J. HUNT	245-542
16	M. Richards	537-536	62 "	205-317	106 "	106
17	R.K. LOMBARDI	611-780	63 B. Pankaj S. Webb	631-1177	107 P.S. TURNER	603-845
18	"	"	64 "	254-448	108 M.K. ROWE	625-24
19	"	"	65 W.C. CLOSE	409-23	109 D.M. CHRISTIAN	607-185
20	N. SIMPSON	508-593	66 M.J. HOWARD	362-222	110 G.M. PATON	587-1004
21	"	"	67 H.D. MERCER	270-362	111 F.A.M. SCHAEFER	538-1213
22	R. DENNIS (and part of 23)	542-535	68 R.F.J. ZIEGLER	551-568	112 A.Y. ADAMS	436-791
23	R.F.B. Ehrenbalt 1/2 24 & 24	562-469	69 J.L. Leffler	633-545	113 M. JONES	435-882
24	"	"	70 J. SASH	201-105	114 A.L. McHenry	679-540
25	H.E. DAVIS	427-123	71 H.E. Schuetzeman	599-358	115 A. Tafelke	663-877
26	"	"	72 "	599-356	116 "	609-324
27	V.I. MILLER	237-583	73 K. PIKE, JR.	665-781	117 D.J. BROWN	516-668
28	W.H. Peckis	578-414	74 T.J. GURNEY	239-32	118 J.A. TAGSCHERER	119 E.V. CORLETT
29	"	"	75 C.W. HUDSON, A.R. HUDSON	672-193	120 "	120
30	R.L. BRATZ	673-726	76 J.D. & P. F. RICHLEK	676-353	121 K.J. SHUTTS	619-70
31	"	"	77 T.A. SANSON	647-300	122 "	661-225
32	E.P. BUCHER	242-626	78 R.V. KUJAT	246-502	123 M. HAINEN	320-313-470-981
33	"	"	79 R.V. KUJAT	246-502	124 C.H. HUNT	284-371
34	Ta. Cong. Decade Ch. of Cl Falls	463-790	80 R.L. & C.J. CORWIN	647-858	125 H.M. JONES, JR.	613-1008
35	"	"	81 L.M. SCALETTA	663-933	126 J.C. KULECK	127
36	"	"	82 M.J. YOONERS	623-44	127 "	587-718
37	J. TRUDICK	678-230	83 C.L. FERRETTE	537-843	128 G.N. OENRIDER	57-1053
38	A.H. GRUD	484-43	84 KE & J.D. SHUTTS	583-114	129 D. GRIFFITH	430-640
39	G.I. C. HILL	251-511	85 M.L. GREINELL	629-493	130 R.F.M. De Santis	131
40	J.M. SAVAGE	665-893	86 C.W. MATTERN	672-774	131 "	520-39
41	"	"	87 J.A. CONLEY	246-417	132 A.P. ZAH	257-484
42	W.W. BOORSE, JR.	530-444, 601-1068	88 D.T. CONLEY	629-538	133 J.F. BLANCK	603-218
43	"	"	89 M.T. BROWN	495-470	134 J.B. MACEY	502-1035
44	R. LASH & KETCHEL	609-331	90 C.P. PETROVIC	423-905	135 T.S. MCCARTHY	538-299

CHAGRIN FALLS

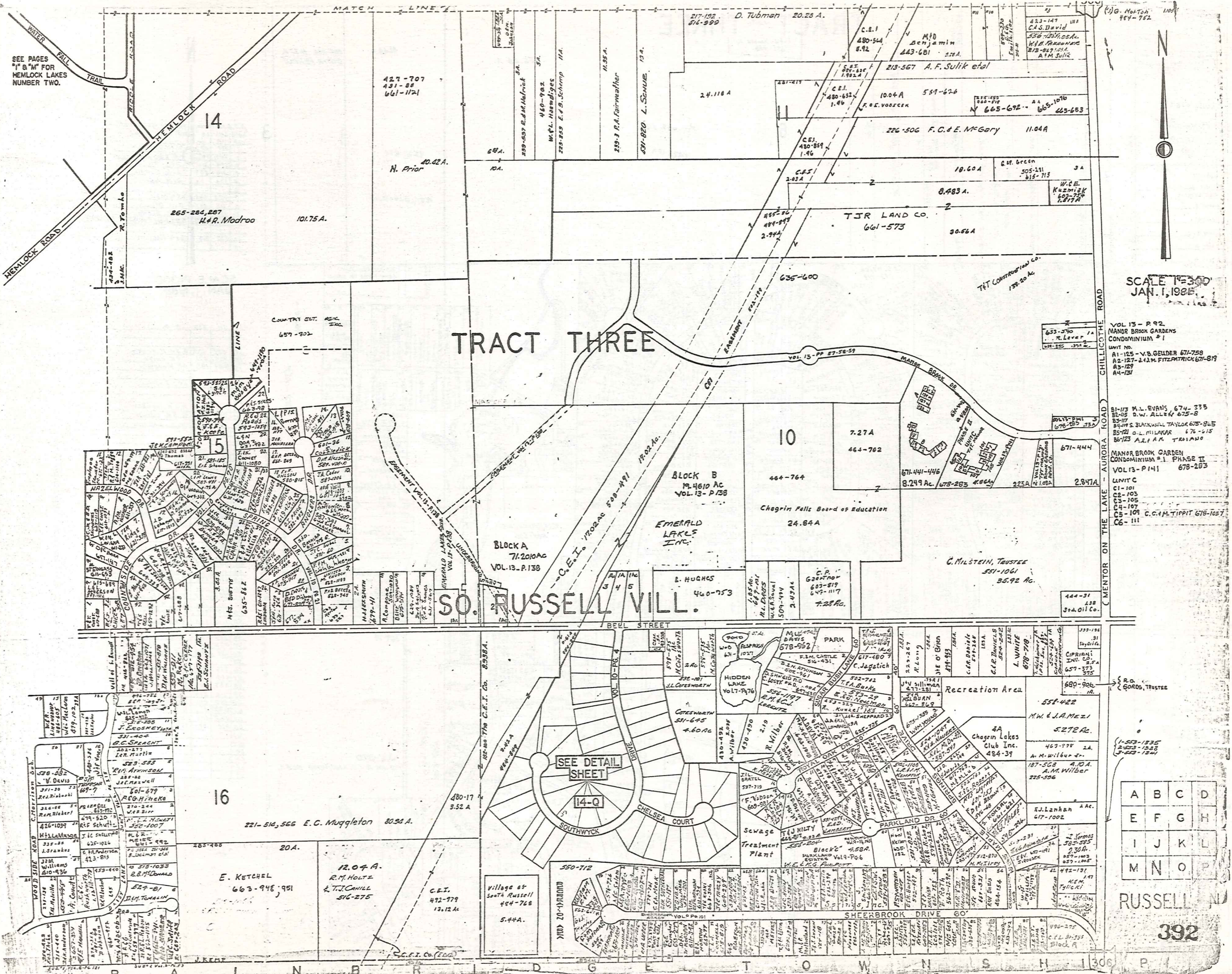
136	M. & M. VARGO	254-409	136 M. VINCE	224-157	256 R.H. EATON	410-1013
137	S. SCHMIDT & P. SCHMIDT	373-455, 433-197	137 M.F. MECKLER	380-326	257 G. Hladik	245-328
138	DORRANI A. MENDEL	673-607	138 H. INGERSOLL	431-740	258 B. SOIKA	480-386
139	SINDELAR (and part of 140)	628-116	139 E.P. Belanger	469-345	259 "	613-85
140	J.G. SINDELAR & 139	501-285	200 "	670-387	260 D.V. Hill	542-81
141	R.K. TROPP	565-599	201 The Turner Co.	538-532	261 D.R. DAVIS	593-776
142	B.N. JOHNSON	657-1034	202 D.K. WARNOCK	569-1106	262 "	603-388
143	"	"	203 "	597-93	263 Scenic 2-262	647-958
144	R.E. & J. HENRY	470-824, 898	204 P.M. EARLY	470-603	264 D.V. SUTUFF	265-159
145	G.E. Kautz	520-334	205 J.M. KROON	569-1106	265 J.D. ZINK	603-388
146	W.H.L.S. WILLIAMSON	553-1097	206 "	597-93	266 G.L. Bogusz	647-958
147	B. TOOHIG	657-422	207 J.R. PISHOTT	388-293	267 "	647-958
148	J. KENNETH HOWELL	362-333	208 "	629-100	268 G.A. & K.A. GILWAY	464-431
149	"	665-147	209 B.L. HADDOCK	629-100	269 "	553-1048
150	P. MARZ	661-401	210 K.R. Schmichel	629-100	270 "	391-300
151	M. YOUNG	565-104	211 "	629-100	271 "	588-527
152	B.P. BARRETT	556-5	212 M. Curd Kort	671-942	272 A.M. MORRILL	574-1327
153	J. SUCHER	671-942	213 E.F. McCoy	246-345	273 L.M. RIZOW	665-989
154	K.R. S. FELKER	671-942	214 Richard J. & Joan Skidley	637-358	274 M.C. Carle	254-177
155	"	671-942	215 "	607-364	275 S. FURY	272-630
156	"	671-942	216 M.F. DLMMAN	574-70	276 A.P. Diegel, Jr.	320-6
157	T.W. HOLT	247-645	217 "	478-200	277 "	285-188
158	D.D. BARRIBALL	607-1037	218 H. SPANGENBERG	551-1278	278 C.Y. BRUBAKER	478-200
159	C. KURTZ	378-273	219 "	524-176	279 R.M. VOSS	558-1080
160	C.D. BEANS & 1/2 161	272-503	220 M.L. PRICE	524-176	280 C.B. STULL	558-1080
161	SKRIDER	659-140	221 L.F. HICKMAN	524-176	281 H.C. STEVEN	558-1080
162	"	659-140	222 R. MURPHY & S. Iannarino	524-176	282 "	558-1080
163	J. TURNER	659-140	223 W. STANTON et al.	524-176	283 G.M. FAUGEL	558-1080
164	"	659-140	224 R.C. THOMAS	524-176	284 R. BLAIR	558-1080
165	Kent D. Rothors	615-671	225 "	524-176	285 "	558-1080
166	J.H. STANTON	647-286	226 K.K. McLean	524-176	286 W. Stanton et al.	558-1080
167	H.S. MOORE	647-286	227 D.V. SUTLIFF	524-176	287 S. R. ARTHUR	558-1080
168	R.H. SEIBERT & J.M. CALVIN	647-286	228 "	524-176	288 C.B. & C.B. KNOWLES, JR.	558-1080
169	N.S. WISE	647-286	229 K.K. McLean	524-176		
170	"	647-286	230 T.D. RAHILL	524-176		
171	L.F. K. CATANIA	585-799	231 "	524-176		
172	"	613-257	232 I. & M. KONIG	524-176		
173	S. NEFF & L. ZUPON	669-1168	233 "	524-176		
174	"	562-380	234 R.D. GILBERT	524-176		
175	C.E. WEYMUELLER	320-281	235 "	524-176		
176	"	180-582	236 J.M. RUNGE	524-176		
177	C. HART	603-60	237 B.J. HEARTZ	524-176		
178	"	478-134	238 R.L. ELLIOTT	524-176		
179	C. CROSKY	591-1007	239 "	524-176		
180	W.L.N. MOONIS	585-515	240 "	524-176		
181	"	653-63, 224-107	241 R. RICE	524-176		
182	J.S. McWilliams	212-77	242 A.F. WALKER	524-176		
183	F.J. Girard	212-272	243 H.B. CARPENTER	524-176		
184	"	653-63	244 R.A. Best	524-176		
185	P.D. NAGIE	601-999	245 "	524-176		
186	D.V. Varty	629-1027	246 M.J. WHITMAN	524-176		
187	"	270-536	247 C. CAMPBELL	524-176		
188	"	589-1000	248 "	524-176		
189	M. VINCE	653-1107	249 M.L. & C.A. HECK	524-176		
190	"	629-1027	250 W.I. STEVENSON	524-176		
191	"	629-1027	251 "	524-176		
192	M. VINCE	629-1027	252 M.J. TURNER	524-176		
193	D.J. Brant Hoover	629-1027	253 M.A. BROWN	524-176		
194	"	629-1027	254 W.M. CROCKETT	524-176		
195	"	629-1027	255 A.S. HEWITT	524-176		



SCALE 1"=300'  
JAN. 1981

A	B	C	D
E	F	G	H
I	J	K	L
M	N	O	P

RUSSELL - M



SEE PAGES  
"I" & "M" FOR  
HEMLOCK LAKES  
NUMBER TWO.

SCALE 1"=300'  
JAN. 1, 1985

VOL 13 - P 92  
MANOR BROOK GARDENS  
CONDOMINIUM #1  
UNIT NO.  
A1-125 - V.B. GELDER 674-758  
A2-127 - J.J.M. FITZPATRICK 678-819  
A3-129  
A4-131

B1-173 M.L. EVANS 674-335  
B2-175 D.W. ALLEN 675-0  
B3-177 S. BLACKWELL TAYLOR 675-965  
B5-171 G.L. MILLIKEN 676-615  
B6-173 A.J. K. T. 678-1000

MANOR BROOK GARDEN  
CONDOMINIUM #1 PHASE II  
VOL 13 - P 141 678-283

LIMIT C  
C1-101  
C2-103  
C3-105  
C4-107  
C5-109 C.C. M. TIPPIT 678-1057  
C6-111

S.R.G. GORDON, TRUSTEE  
581-422  
M.W. & J.A. MEZI  
5272 AC.  
427-778 2A  
A.M. Wilber Jr.  
187-508 4A  
225-596

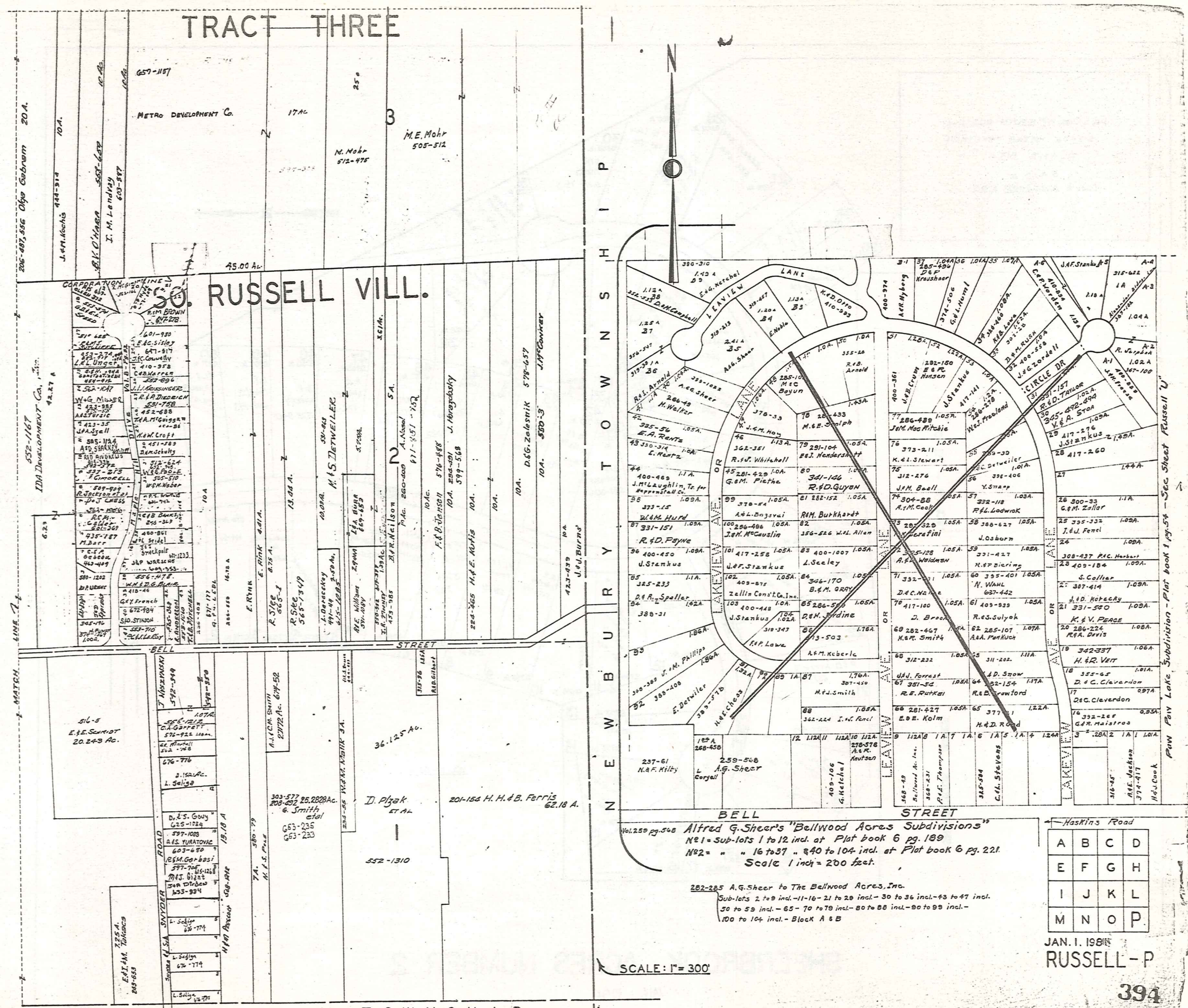
1-503-1935  
2-503-1935  
3-503-1935

A	B	C	D
E	F	G	H
I	J	K	L
M	N	O	P

RUSSELL VILL.



# TRACT THREE



## RUSSELL VILL.

N E W B U R Y T O W N S H I P

B A I N B R I D G E T O W N S H I P

**BELL STREET**  
 Vol. 250 pg. 508 Alfred G. Shear's "Bellwood Acres Subdivisions"  
 No. 1 = sub-lots 1 to 12 incl. at Plat book 6 pg. 189  
 No. 2 = " 16 to 37 " 40 to 104 incl. at Plat book 6 pg. 221  
 Scale 1 inch = 200 feet.

262-265 A.G. Shear to The Bellwood Acres, Inc.  
 Sub-lots 2 to 9 incl. - 11-16 - 21 to 26 incl. - 30 to 36 incl. - 43 to 47 incl.  
 50 to 59 incl. - 65 - 70 to 79 incl. - 80 to 88 incl. - 90 to 99 incl. -  
 100 to 104 incl. - Block A & B

A	B	C	D
E	F	G	H
I	J	K	L
M	N	O	P

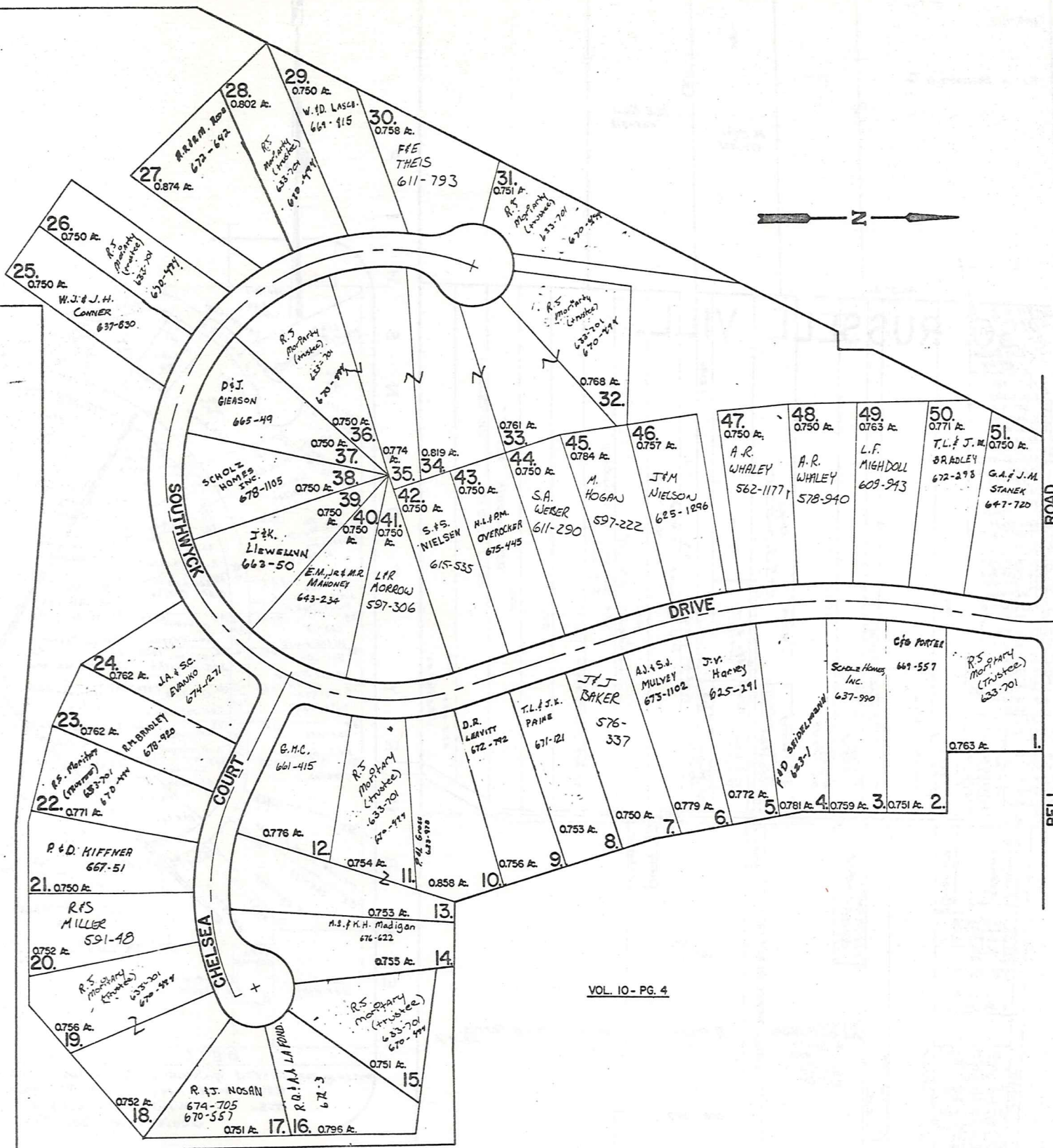
JAN. 1. 1988  
**RUSSELL - P**

VILLAGE OF SOUTH RUSSELL  
 WASTE WATER TREATMENT  
 PLANT SITE  
 5.440 A.  
 (0.29 A BAINBRIDGE TWP.)

BAINBRIDGE TOWNSHIP  
 RUSSELL TOWNSHIP

VOL. 9 - PG. 101

SHEERBROOK ACRES



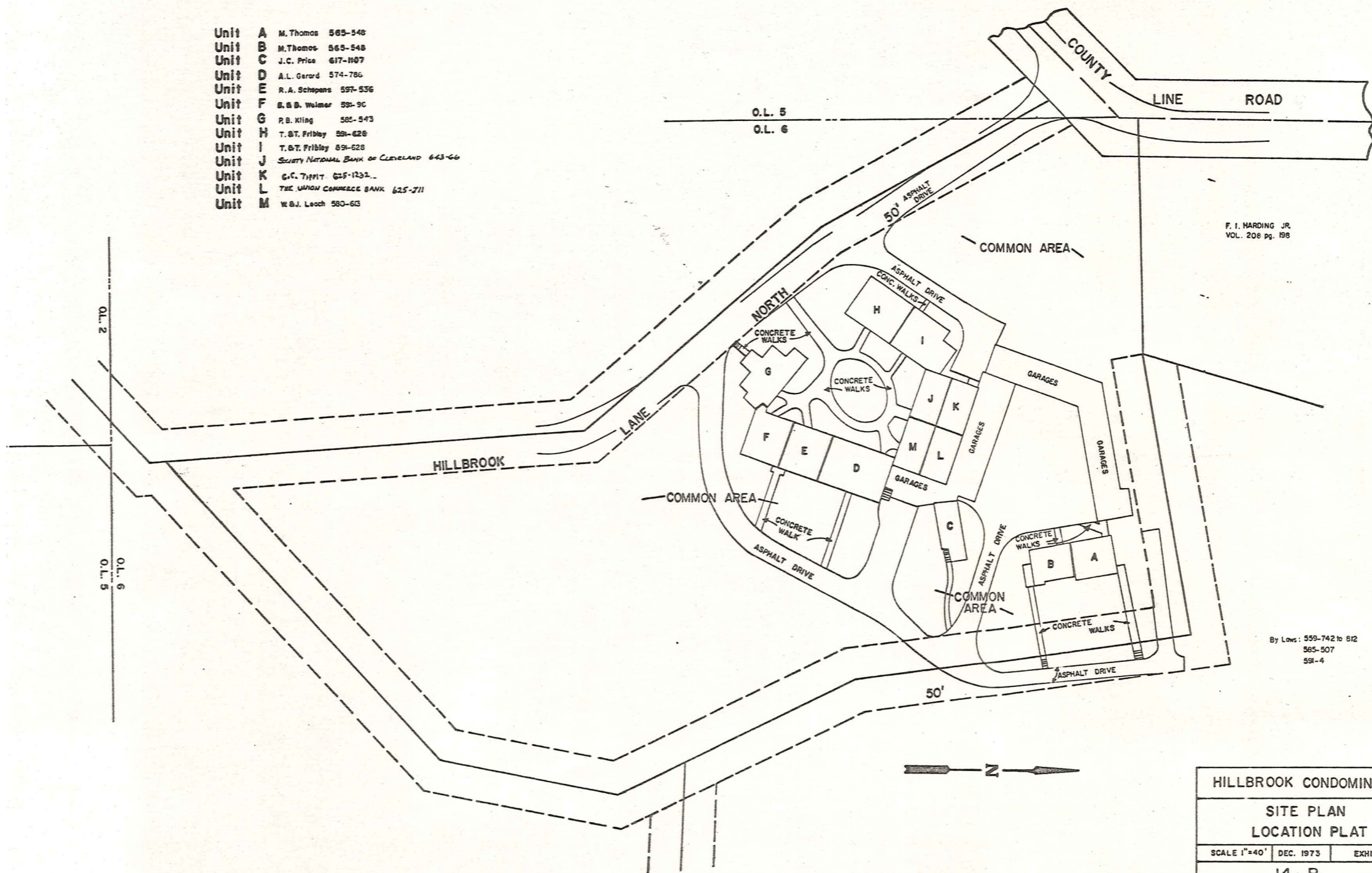
VOL. 10 - PG. 4

SHEERBROOK ACRES NUMBER 2

JAN. 1, 1981

# HILLBROOK CONDOMINIUM

- Unit A M. Thomas 565-548
- Unit B M. Thomas 565-548
- Unit C J.C. Price 617-1107
- Unit D A.L. Gerard 574-786
- Unit E R.A. Schapens 597-536
- Unit F B.B. Walmer 591-9C
- Unit G P.B. Kilg 585-543
- Unit H T.G.T. Fribbley 591-628
- Unit I T.G.T. Fribbley 591-628
- Unit J SOCIETY NATIONAL BANK OF CLEVELAND 643-66
- Unit K G.C. Tippitt 625-1232
- Unit L THE UNION COMMERCE BANK 625-711
- Unit M W.B.J. Leach 580-653



F. I. HARDING JR.  
VOL. 208 pg. 198

By Laws: 559-742 to 812  
565-507  
591-4

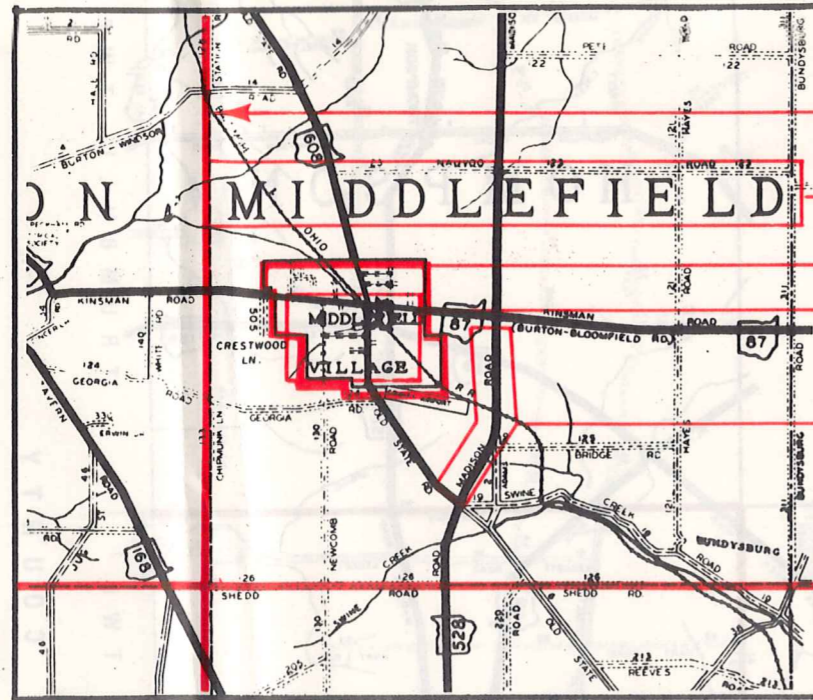
HILLBROOK CONDOMINIUM		
SITE PLAN LOCATION PLAT		
SCALE 1"=40'	DEC. 1973	EXHIBIT B
14 - R		

Recorded Vol. 10 pg. 39

JAN. 1, 1981

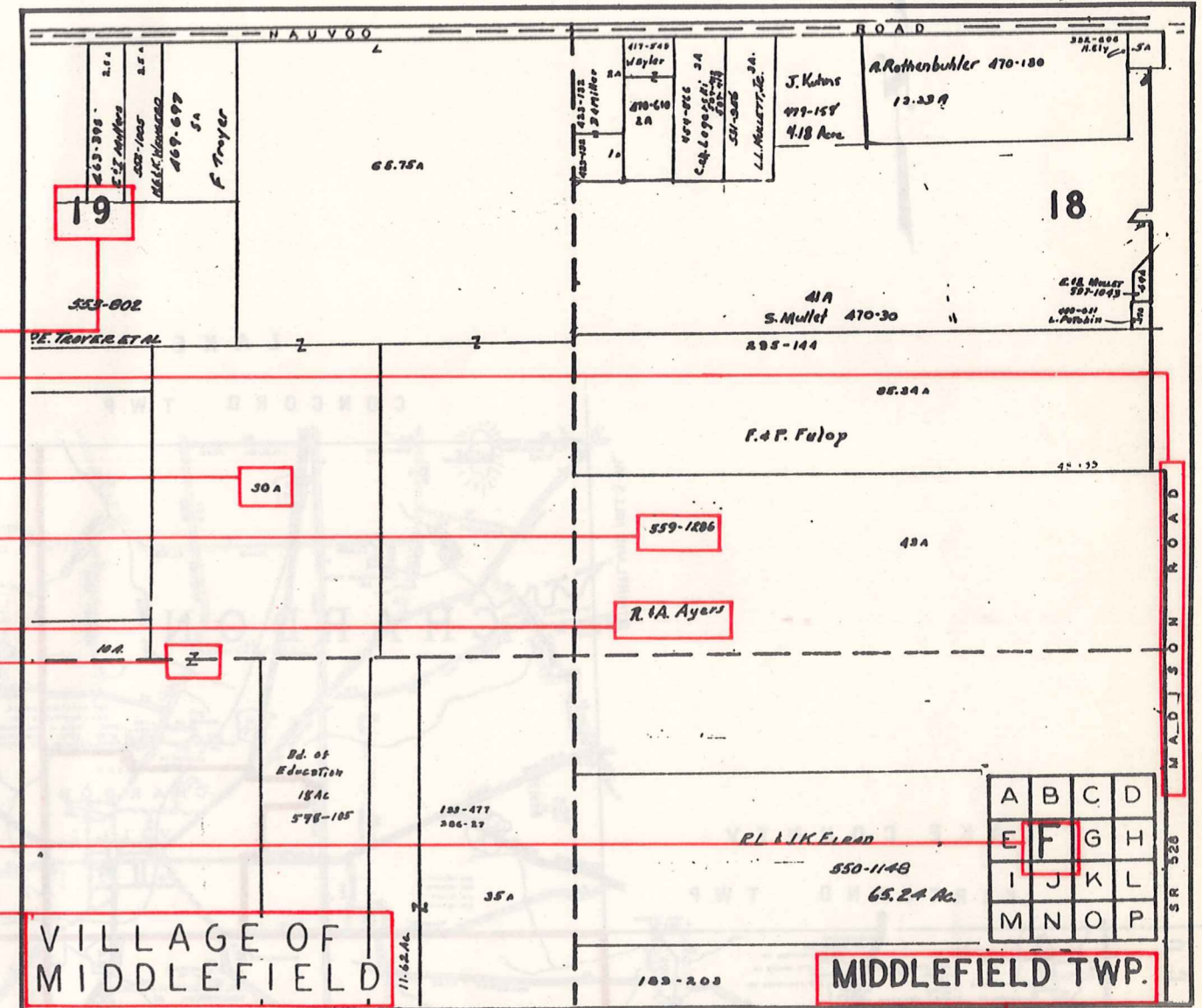
# Explanation and Use Sheet for Geauga County, Ohio

SAMPLE (PARTIAL) COUNTY INDEX MAP



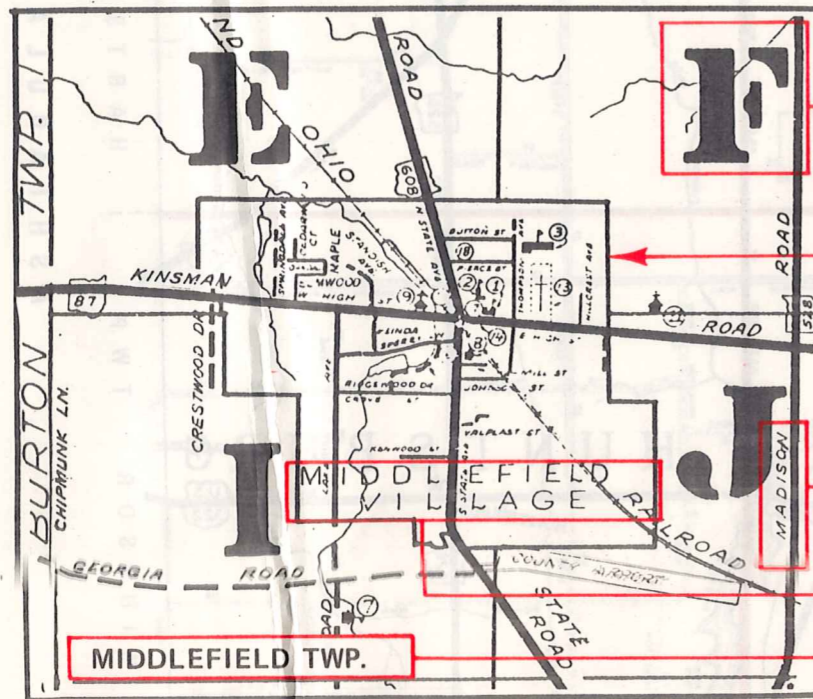
- Township Boundary
- Township Name
- Village Boundary
- Village Name
- Tract Lot Number
- Street Name
- Acreage
- Deed Book & Page
- Owners Name
- Denotes Continous Ownership

SAMPLE (PARTIAL) MAP PAGE



- Map Page Number
- Village Name
- Village Boundary
- Township Name

SAMPLE (PARTIAL) MUNICIPALITY INDEX MAP



- Street Name
- Village Name
- Township Name

## USE OF THE MAP VOLUME

1. LOCATE THE GENERAL AREA OF INTEREST ON THE COUNTY INDEX MAP, ATLAS PAGE 'B', AND NOTE THE MUNICIPALITY NAME (TOWNSHIP OR VILLAGE).
2. REFER TO THE TABLE OF CONTENTS, ATLAS PAGE 'C', AND NOTE THE BEGINNING ATLAS PAGE NUMBER FOR THE MUNICIPALITY OF INTEREST.
3. TURN TO THE PAGE INDICATED. ON THIS PAGE WILL APPEAR AN INDEX MAP FOR THAT MUNICIPALITY.
4. LOCATE THE GENERAL AREA OF INTEREST AND NOTE THE MAP PAGE NUMBER. THIS MAY BE EITHER A LETTER OR A NUMBER.
5. MAP PAGES ARE IN ALPHABETICAL (OR NUMERICAL) SEQUENCE FOLLOWING THE MUNICIPALITY INDEX MAP. FOLLOW SEQUENCE TO THE MAP PAGE INDICATED.
6. LOCATE SPECIFIC PARCEL OF INTEREST AND NOTE THE DESIRED INFORMATION.

NOTE: ON SOME MAPS YOU MAY BE REFERRED TO A DETAIL SHEET SHOWING AN ENLARGEMENT OF THE AREA. THESE MAPS ARE FOUND AT THE END OF THE REGULAR MAP PAGES IN EACH MUNICIPALITY IN EITHER ALPHABETICAL OR NUMERICAL SEQUENCE.

NOTE: CHARDON VILLAGE HAS TITLE SHEETS. TO LOCATE OWNERS NAME, NOTE THE PARCEL NUMBER, REFER TO THE TITLE PAGE FOLLOWING THE MAP OF INTEREST, FOLLOW NUMERICAL SEQUENCE TO THE PARCEL NUMBER OF INTEREST AND NOTE THE DESIRED INFORMATION. IN ALL OTHER MUNICIPALITIES THE OWNERS NAME APPEARS ON THE MAP PAGE.

This book is the property of REAL ESTATE DATA, INC. and is distributed by REDI under a leasing arrangement requiring return to REDI upon termination of the lease. REDI reserves the right to reclaim this book if found in the possession of any firm or person where possession was obtained through any unauthorized source.